

Institutional Development Plan (IDP)

2025-2040



Jain Vishva Bharti Institute
(Deemed to-be University)

Ladnun-341306, Rajasthan

A Vision Document for 15-Year Institutional Excellence Roadmap

Jain Vishva Bharati Institute (JVBI), Ladnun envisions a transformative journey over the next 15 years that positions the university as a national and global leader in higher education, rooted in Indian philosophical traditions and modern academic innovation. This Institutional Development Plan (IDP) serves as a Vision Document and strategic blueprint to foster academic excellence, research innovation, value-based education, and social responsibility, all while aligning with National Education Policy (NEP) 2020, Sustainable Development Goals (SDGs), and the University Grants Commission (UGC) guidelines.

The IDP lays out a structured and actionable roadmap that spans two distinct phases: short-term and long-term goal. Each phase focuses on strengthening core institutional values, modernizing infrastructure, expanding research and innovation, enhancing international collaborations, and nurturing socially responsible leaders.

The Institutional Development plan of Jain Vishva Bharti Institute for next 15 years, i.e. from 2025 to 2040 has been prepared considering the following:

1. **National Educational Frameworks:** Integration of NEP 2020 priorities, such as multidisciplinary education, outcome-based learning, and skill development.
2. **Institutional Vision and Mission:** Alignment with JVBI's foundational values of non-violence, peace, holistic development, and academic excellence.
3. **Stakeholder Consultations:** Feedback from faculty, students, administrative leadership, alumni, industry experts, and community partners.
4. **Performance and Benchmarking Data:** Analysis of past NAAC, NIRF, and IQAC reports, academic audits, research output, and accreditation feedback.
5. **Best Practices:** Adoption of successful models from national and international institutions, while customizing them to the unique ethos of JVBI.
6. **Sustainability and Inclusivity:** Emphasis on green initiatives, energy conservation, gender equity, and outreach to underserved communities.
7. **Technology and Digitization:** Vision for a smart, digitally integrated campus aligned with modern pedagogical and administrative practices.

8. Future Readiness: Focus on global trends in education, employability, innovation ecosystems, and institutional resilience.

This IDP is not just a roadmap but a living document that will guide strategic decision-making, annual planning, and performance review over the next decade and a half. It reflects JVBI's aspiration to be a model university that blends ancient wisdom with modern knowledge, empowering students and scholars to contribute meaningfully to national and global development.

1. Jain Vishva Bharati Institute (Deemed University), Ladnun
JVBI is committed to provide highest quality of educational services to the utmost satisfaction of the students and give them an opportunity to cultivate an integrated personality blended with spirituality and moral values.

JVBI was established with the inspiration of Gurudev Tulsi in Ladnun, District Deedwana-Kuchaman, Rajasthan. In 1991, Government of India notified JVBI as Deemed-to-be University under Section 3 of University Grants Commission Act, 1956. The Institute continues to be housed in the common campus of its parent body organization Jain Vishva Bharati. Gurudev Shri Tulsi remained its first constitutional Anushasta (moral and spiritual guide) followed by Acharya Shri Mahaprajna as its second Anushasta. Acharya Mahashraman is its present Anushasta. The goal of the JVBI is has been clearly spelt out in the Preamble of its Constitution (Memorandum and Articles of Association) which reads as under:

"The Jain Vishva Bharati Institute is an endeavour in the direction of putting into practice, promote and propagate the high ideals of Anekant, Ahimsa, Tolerance and Peaceful Co-existence for the weal of the mankind. We, the members of the Jain Vishva Bharati, therefore resolve to constitute and establish the said University of Advanced Studies, Research & Training in Jainology in the context of comparative studies in Indology, World Religions, Ahimsa and World Peace."

Jain Vishva Bharati Institute (JVBI), Ladnun, aims to promote academic excellence, interdisciplinary research, and overall education rooted in ethical and sustainable practices. This Institutional Development Plan (IDP) outlines the university's strategic roadmap for the next 15 years (2025-2040), encompassing short-term (1-5 years) and long-term (5-15 years) developmental goals to enhance academic infrastructure, governance, research, and community engagement.

2. Vision and Mission

To establish JVBI as a global center of excellence in education, research, and cultural heritage, with a commitment to societal development and sustainable growth.

- To preserve and promote the legacy of Indian culture, Oriental studies, Jain Philosophy, moral values and ethics in higher education.
- To re-energize and revitalize centuries old cumulative spiritual knowledge.
- To provide highest quality of educational services to the utmost satisfaction of the student and give them an opportunity to cultivate an integrated personality.
- To promote and propagate and practice the high ideals of anekant, ahimsa, tolerance and peaceful co-existence for the welfare of humanity.
- To offer advance studies, research and training in the context of comparative studies in Indology, Social Science, Education and Humanities.

Nanassa Saram Ayaro

(Right conduct is the essence of right knowledge)

"Let the voice of peace, nonviolence & harmony spread throughout the world."

- To promote interdisciplinary and value-based education aligned with NEP 2020.
- To encourage research and innovation in humanities, sciences, and sustainable development.
- To nurture entrepreneurial culture and skill development.
- To enhance global collaborations and strengthen community outreach.

Alignment with NEP 2020 and SDGs

The IDP is fully aligned with the strategic pillars of the NEP 2020, including:

- Holistic and Multidisciplinary Education
- Flexible Curriculum Structures with Multiple Entry/Exit Options
- Emphasis on Research, Innovation, and Digital Pedagogy
- Promotion of Regional Languages and Indian Knowledge Systems
- Skill Development, Employability, and Global Competency

Additionally, the University's goals are mapped to the United Nations Sustainable Development Goals (SDGs), particularly:

- SDG 4: Quality Education
- SDG 5: Gender Equality
- SDG 13: Climate Action
- SDG 16: Peace, Justice, and Strong Institutions

Commitment to Academic Excellence and Holistic Development

JVBI commits to becoming a beacon of academic distinction and holistic human development by:

- Enhancing institutional capacity through modern infrastructure, advanced laboratories, and ICT integration.
- Expanding interdisciplinary research, international partnerships, and entrepreneurship.
- Ensuring inclusive and equitable opportunities for all stakeholders, with a focus on rural, tribal, and underrepresented groups.
- Embedding sustainability, cultural heritage, and ethical frameworks in all University functions.

This IDP thus presents not only a roadmap for institutional development but also a reaffirmation of JVBI's unwavering commitment to shaping the future of education in India and beyond.

2. Institutional Overview

2.1 Historical Evolution

Jain Vishva Bharati Institute (JVBI) was established in 1991 under Section 3 of the UGC Act, 1956, as a Deemed-to-be University with the noble vision of promoting the teachings of Jain philosophy, peace, non-violence, and holistic education. Founded under the spiritual guidance of Acharya Tulsi and Acharya Mahapragya, JVBI is unique in integrating traditional Indian knowledge systems with contemporary academic disciplines.

The institute began as a center for spiritual learning and has gradually evolved into a multidisciplinary University offering undergraduate, postgraduate, and doctoral programs in humanities, social sciences, Jainology, philosophy, non-violence, education, and more. Over the decades, JVBI has maintained its commitment to character-building, social harmony, and value-based education while adopting modern academic innovations.

2.2 Academic and Research Milestones

- Accredited by NAAC with an 'A' Grade and a CGPA of 3.04.
- Recognized nationally for programs in Jain Studies, Nonviolence and Peace Studies, and Yoga Science.
- Introduced interdisciplinary programs and skill-based learning aligned with NEP 2020.
- Promoted research through Ph.D. programs, national seminars, and faculty development initiatives.
- Established research collaborations with academic institutions and civil society organizations.

2.3 Societal Contributions and Community Engagement

JVBI has played a leading role in community-centric development and Gandhian outreach through:

- Rural extension programs on sustainable living, women's empowerment, and moral education.
- Peace education campaigns and training programs in schools and colleges.
- Cultural preservation initiatives involving Jain manuscripts, Prakrit language, and traditional arts.
- Environmental awareness drives and clean campus campaigns aligned with Swachh Bharat Mission.

2.4 Institutional Strengths

- Rooted in ethical and spiritual philosophy, emphasizing peaceful coexistence and self-discipline.
- Compact, clean, and eco-friendly campus located in a spiritually vibrant region.
- Dedicated and value-driven faculty members and administrative staff.
- Strong community engagement and heritage-led academic identity.

2.5 Emerging Aspirations

- To transform into a multidisciplinary institution of national eminence.
- To be recognized as a global reference center for Jain Studies and Nonviolence Research.
- To integrate technology-enabled learning, AI tools, and blended pedagogies.
- To position JVBI in top rankings of NIRF and NAAC A++ category.
- To create an inclusive, innovation-oriented, and globally connected academic ecosystem.

This overview reflects JVBI's evolution from a spiritual and philosophical center to a dynamic academic institution ready to embark on a transformative 15-year journey through its Institutional Development Plan.

SWOC Analysis of Jain Vishva Bharati Institute (JVBI)

Strengths

- Strong philosophical foundation rooted in Jain principles of non-violence, pluralism, and ethical living.
- NAAC 'A' Grade accreditation with a CGPA of 3.04.
- Recognized expertise and national leadership in areas such as Jainology, Peace and Nonviolence Studies, and Yoga Science.
- Clean, eco-friendly, and spiritually enriched campus environment conducive to reflective learning.
- Strong community engagement and socially responsible initiatives aligned with Gandhian values.
- High level of institutional integrity and value-based leadership with support from the Jain Terapanth religious tradition.
- Dedicated and disciplined faculty and administrative staff with high moral commitment.

Weaknesses

- Limited funding and dependency on government grants and religious trusts for development initiatives.
- Need for enhanced research output and indexed publications in globally reputed journals.
- Insufficient international collaborations and faculty exchange programs.
- Limited exposure of students to skill-based training, internships, and industry-linked curriculum.
- Technological infrastructure such as ICT-enabled classrooms and LMS needs further expansion.

Opportunities

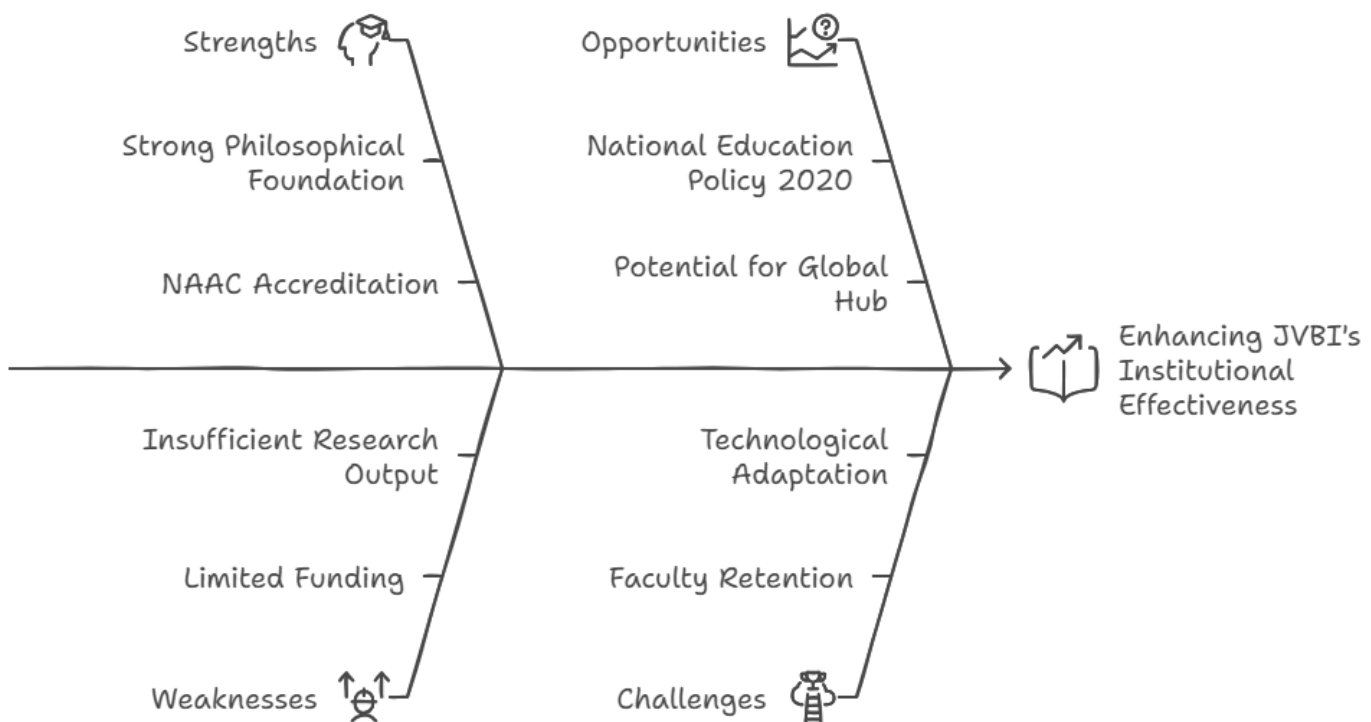
- National Education Policy 2020 provides opportunities to redesign curriculum and promote multidisciplinary learning.
- Potential to become a global hub for Jain Studies, interreligious dialogue, and peace education.
- Scope for enhancing online and distance education programs in Jain philosophy and spiritual studies.
- Possibility of partnerships with national and international universities, NGOs, and industries.
- Untapped potential to increase research funding through external grants and CSR initiatives.

Challenges

- Attracting and retaining high-quality faculty in remote geographic location.

- Competing with larger, better-funded multidisciplinary universities in national rankings.
- Adapting to rapid technological changes in education delivery.
- Meeting the expectations of diverse stakeholders while preserving the core spiritual mission.
- Ensuring adequate placement opportunities and entrepreneurship support for students.

SWOC Analysis of Jain Vishva Bharati Institute



3. Institutional Goals

3.1 Short-Term Goals (1-5 years)

1. Academic Excellence:
 - Implement Outcome-Based Education (OBE) and Bloom's Taxonomy to enhance teaching-learning outcomes.
 - Revise and update curriculum across all departments to meet industry standards and incorporate emerging areas of study, like Environmental Studies, Naturopathy and Sustainable Development.
 - Develop interdisciplinary programs in collaboration with national and international institutions.
 - Introduce new skill-based Certificate programmes.
 - Revise and modernize the curriculum incorporating Indian Knowledge Systems (IKS).

2. Faculty Development & Research
 - Conduct Faculty Development Programs (FDPs) and research training workshops.
 - Establish Research and Development (R&D) Cell for interdisciplinary studies.
 - Strengthen Intellectual Property Rights (IPR) Cell for patent filing.
 - Encourage faculty to publish in Scopus/Web of Science journals.
3. Student Development and Support
 - Establish a Student Support Center to offer career counseling, skill development, and mental health support.
 - Introduce online and offline training programs for competitive exams like NET, SET, CET and UPSC.
 - Expand scholarships and financial aid programs to support economically disadvantaged students.
4. Strengthen Extension and Outreach Activities
 - Launch community engagement programs under NSS and NCC, with a focus on environmental awareness, digital literacy, and health and hygiene.
 - Collaborate with NGOs and government agencies to address local social issues and promote community development.
5. Infrastructure & Digital Transformation
 - Develop high-speed Wi-Fi, and digital libraries.
 - Upgrade laboratories and establish innovation hubs.
 - Implement a Learning Management System (LMS) for blended learning.
 - Begin the installation of smart classrooms with high-speed internet, projectors, and smartboards in all the classes.
 - Upgrade the library to include more digital resources, e-journals, and subscriptions to databases like JSTOR, ShodhGanga, and ShodhSindhu.
 - Implement a campus-wide Learning Management System (LMS) for online learning and academic resource sharing.
6. Student Support & Employability
 - Strengthen the placement and career guidance cell.
 - Launch incubation centers and entrepreneurship programs.
 - Expand student counseling and mentorship services.
7. Implement feedback Mechanisms:
 - Create a robust feedback system for the students, faculty, alumni, Industry experts, parents and staff.
 - Conduct surveys and organize focus groups to gather inputs on governance and institutional policies.

8. Improve Financial Management:

- Conduct internal and external audits to ensure financial transparency and accountability.
- Establish a committee to oversee budgeting, fund allocation and expenditure for University and Individual departments respectively.

9. NAAC/NIRF Ranking Enhancement

- Implement a structured quality enhancement framework.
- Improve student-faculty ratio, research funding, and MoUs.
- Organize peer review meetings and mock audits before accreditation visits.
- Based on a 5-year cycle, prepare for the next NAAC accreditation and NIRF assessment with enhanced documentation, higher benchmarks, and improved metrics.
- Target a stable position among the top-ranked institutions in both NAAC and NIRF rankings, aiming to sustain or exceed an "A++" NAAC grade and a top-100 NIRF position.

10. Capacity building for Faculty Members:

- Organize training programs, workshops, and conferences for faculty on research methodologies, academic writing, and digital tools.
- Establish a Research and Development (R&D) Cell to support and monitor research activities.
- Encourage faculty to publish in high-impact journals and apply for research grants from government and private funding bodies.
- Set targets for faculty to publish at least two Scopus/Web of Science-indexed papers annually.

3.2 Long-Term Goals (5-15 years)

1. Academic & Research Expansion

- Establish new Schools of Excellence in emerging areas Environmental Studies and Naturopathy.
- Establish a new mode of Online Education in the University.
- Target faculty publications in top journals (Scopus, Web of Science) and set a benchmark for patent filings.
- Develop a Research Center for interdisciplinary PhD programs.
- Secure global research funding and collaborate with international universities.
- Collaborate with foreign institutions to introduce short-term exchange programs.
- Digital Learning, MOOCs, and Blended Teaching Strategies.
- Offer financial incentives for faculty who publish high-impact research papers or secure research grants.

- Initiate training programs for non-teaching staff to improve administrative efficiency and service quality.
 - Facilitate higher studies and skill development programs for faculty through FDP's and CAS.
 - Provide seed funding for at least two innovative projects from each department to encourage applied research.
 - Encourage interdisciplinary research, particularly in areas aligning with the UN Sustainable Development Goals (SDGs).
2. Research Center of Excellence
- Establish a Center of Excellence in key research areas like Environmental Studies, Jain Philosophy, and Interdisciplinary Studies.
 - Allocate dedicated funds for high-impact research projects and encourage publication in international journals.
3. Branding and Visibility
- Strengthen the University's brand image through social media, press releases, academic conferences, and participation in educational fairs.
 - Showcase JVBI's achievements, faculty research, and student success stories to increase visibility and attract high-quality students and faculty.
4. Infrastructure Expansion
- Initiate the construction of an advanced research lab with facilities for interdisciplinary studies and experiments.
 - Begin the setup of hostels with modern amenities, ensuring adequate accommodation for both male and female students.
 - Develop recreational and sports facilities to promote physical fitness and well-being among students.
5. Sustainable Campus & Green Initiatives
- Implement a full digital transformation by making UMS implemented across administrative and academic services, aiming for a paperless and efficient campus.
 - Implement solar power systems to reduce dependency on non-renewable energy sources.
 - Expand the existing rainwater harvesting system and install water conservation mechanisms across the campus.
 - Promote a paperless campus initiative, using digital tools for administration and record-keeping.
 - Develop a zero-waste campus through waste management strategies.
 - Establish a Center for Sustainable Development & Ethics.
 - Continue to expand green initiatives with an emphasis on achieving carbon neutrality.

6. Global Collaborations & Outreach

- Sign MoUs with top international universities and research institutes.
- Expand faculty and student exchange programs.
- Organize international conferences and joint research projects.

7. Governance & Financial Sustainability

- Review and update the composition and roles of BoM and other committees.
- Ensure the inclusion of diverse stakeholders in decision making processes.
- Strengthen e-governance and digital automation for administration via UMS (University Management System) Software.
- Develop Public-Private Partnership (PPP) models for funding.
- Establish an endowment fund for research and scholarships.

8. Alumni Engagement & Community Development

- Strengthen alumni networks and launch mentorship programs.
- Establish skill development centers for the local community.
- Develop an annual outreach program for Jain philosophy and heritage promotion.
- Develop a dedicated portal for the engagement of alumni at large.
- Establish a formal alumni network and conduct annual alumni meet-ups to promote relationships and gain support for institutional development.
- Initiate alumni mentorship programs to provide guidance to current students in terms of career planning and networking.

4. Plan for Enabling effective Financial and Funding Model

To ensure long-term financial sustainability and institutional autonomy, Jain Vishva Bharati Institute (JVBI) will adopt a diversified and balanced revenue generation strategy based on the following three equally weighted pillars:

1. One-third from Student Fees:

- Tuition fees collected from regular, distance, and online education programs.
- Introduction of skill-based, certificate, and short-term programs to attract learners and enhance revenue streams.

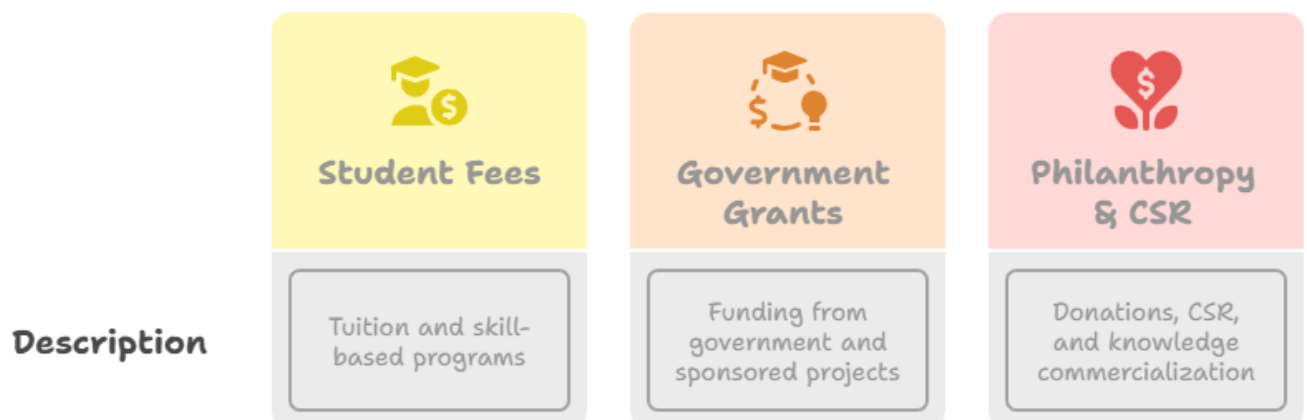
2. One-third from Government Grants and Sponsored Projects:

- Funding from UGC, Ministry of Education, and other central/state government bodies.
- Competitive grants and fellowships under schemes such as RUSA, DST-FIST, ICSSR, and AICTE.

- Sponsored research and development projects in collaboration with government and academic bodies.
3. One-third from Philanthropy, CSR, and Knowledge Commercialization:
- Donations and endowments from alumni, religious institutions, and philanthropic trusts.
 - Corporate Social Responsibility (CSR) funding for community development, sustainability, and education initiatives.
 - Revenue from royalties on intellectual property, patents, publications, and consultancy services.

This three-pronged model will not only safeguard the financial health of the university but also encourage academic entrepreneurship, social engagement, and innovation-driven growth.

JVBI Revenue Generation Strategy



5. Implementation Framework

The successful realization of the Institutional Development Plan (IDP) depends on a robust, dynamic, and participatory implementation framework. JVBI proposes a structured approach for monitoring, reviewing, funding, and adapting the IDP to ensure its relevance and effectiveness over 15 years.

1. Yearly Review and Monitoring

- An annual Institutional Development Review Report will be prepared to assess the progress of short-, mid-, and long-term goals.
- The Internal Quality Assurance Cell (IQAC) will lead the evaluation process, incorporating both qualitative and quantitative performance indicators.
- Each department will submit quarterly and annual reports aligned with IDP milestones.

2. Stakeholder Involvement

- JVBI will conduct regular multi-stakeholder meetings, including faculty, administrative leadership, student representatives, alumni, and industry partners.
- Feedback mechanisms such as surveys, workshops, and focus groups will be used to incorporate stakeholder insights and refine strategies.
- A Strategic Advisory Committee comprising external experts will offer guidance and periodic assessment.

3. Funding and Resource Mobilization Strategy

- Proposals will be submitted regularly to government funding agencies such as UGC, AICTE, DST, ICSSR, and RUSA.
- Dedicated efforts will be made to attract CSR contributions, alumni endowments, and philanthropic support.
- The university will establish a Grants and Development Office to coordinate resource mobilization, proposal writing, and donor engagement.

4. Continuous Review and Improvement

- The IDP will be considered a dynamic document, reviewed and updated every two years in light of changing national policies, global education trends, and institutional aspirations.
- Benchmarking against top-performing universities will guide enhancements.
- JVBI will adopt a data-driven decision-making model, supported by Management Information Systems (MIS) for planning and implementation.
- Through this implementation framework, JVBI ensures that the Institutional Development Plan remains focused, accountable, and flexible, capable of driving the university's transformation into a globally respected institution.

6. Future Roadmap for Institutional Excellence

JVBI's 15-year roadmap is anchored in three progressive phases of Foundation, Expansion and Excellence with strategic milestones defined for each phase:

Foundation Phase: Building Capacity and Reforms

- Curriculum restructuring aligned with NEP 2020 and Outcome-Based Education (OBE).
- Establishment of new interdisciplinary programs in Jainology, Applied Ethics, Peace Studies, and Environmental Sustainability.
- Digital transformation: LMS deployment, virtual classrooms, e-governance systems.

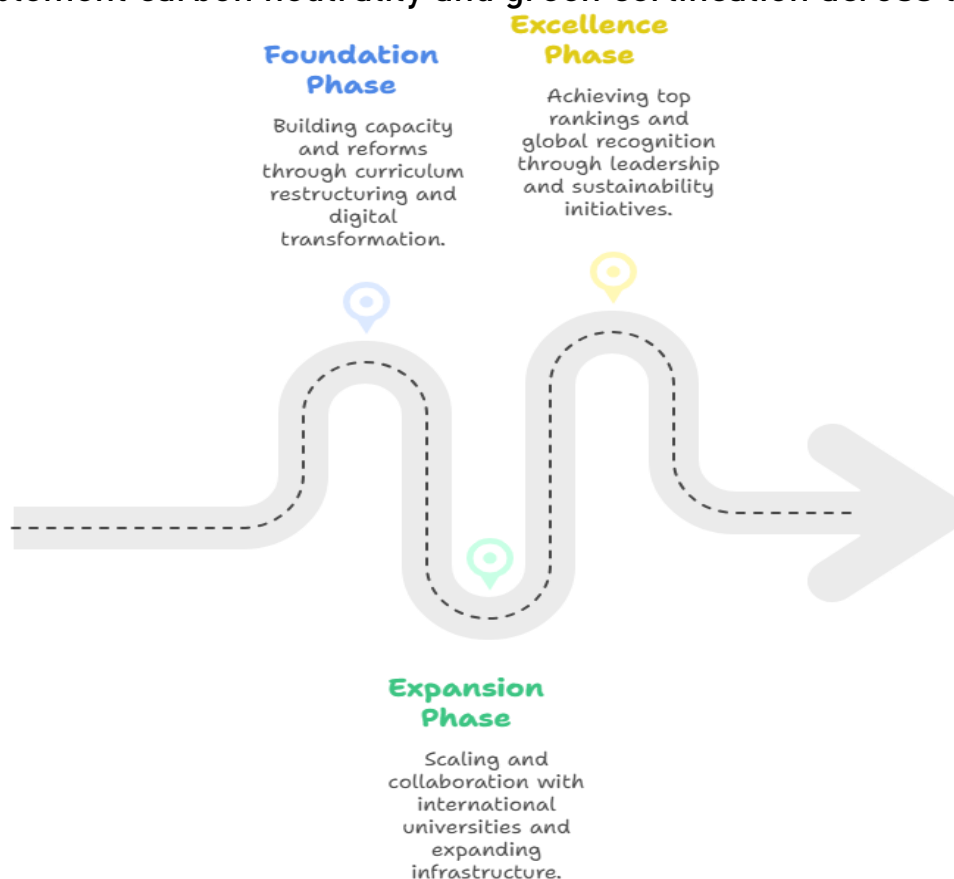
- Faculty training and capacity building through FDPs, orientation, and global exposure programs.
- Set up of dedicated Research and Innovation Cells and IPR facilitation center.

Expansion Phase: Scaling and Collaboration

- Establishment of Centers of Excellence in Jain Studies, Nonviolence, Yoga, and Indigenous Knowledge Systems.
- Institutional collaborations with international universities and research organizations.
- Expansion of campus infrastructure: smart classrooms, research labs, student hostels, and green facilities.
- Launch of JVBI's Online Learning Portal for global outreach and lifelong learning.
- Strengthening of community engagement through health, literacy, and sustainability outreach programs.

Excellence Phase: Leadership and Global Recognition

- Achieve top-100 ranking in NIRF and aim for NAAC A++ accreditation.
- Recognized as a global hub for Jain Studies, Peace Research, and Ethical Governance.
- Host international conferences, UNESCO chairs, and academic festivals.
- Launch doctoral schools with interdisciplinary global fellowships.
- Implement carbon neutrality and green certification across the campus.



Throughout all three phases, JVBI will focus on inclusivity, innovation, accountability, and sustainability as core guiding principles to realize its vision of academic distinction, social responsibility, and spiritual wisdom.

This Institutional Development Plan aims to position JVBI as a center of academic and research excellence while preserving its core values and promoting sustainable and inclusive growth. By implementing this strategic roadmap, the university will significantly improve teaching-learning quality, research output, global collaborations, and community impact, making it a leading institution in India and beyond.

Prepared by- Institutional Planning & Development Committee
(In collaboration with IQAC Cell)
Jain Vishva Bharati Institute, Ladnun