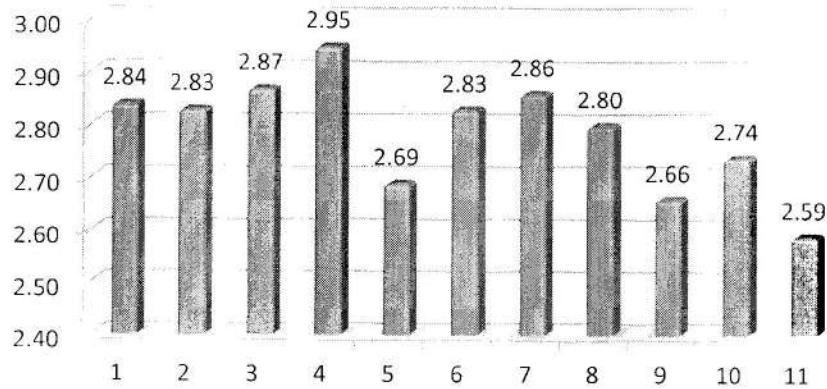


JAIN VISHVA BHARATI INSTITUTE, LADNUN

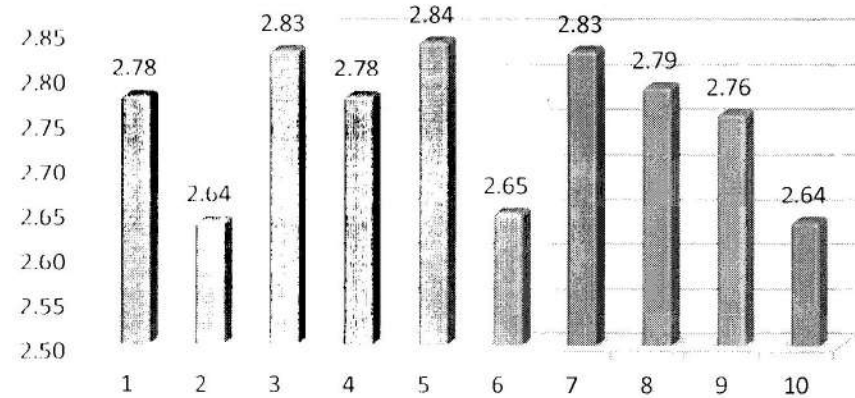
Internal Quality Assurance Cell (IQAC)

ACTION TAKEN FOR THE ANALYSIS OF FEEDBACK COLLECTED FROM FACULTY, STUDENTS, PARENTS, EMPLOYER, ALUMNI ON CURRICULUM

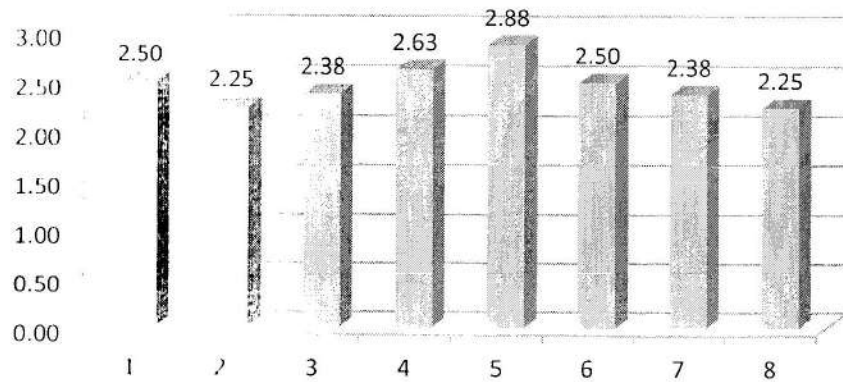
Analysis of Faculty Feedback on Curriculum



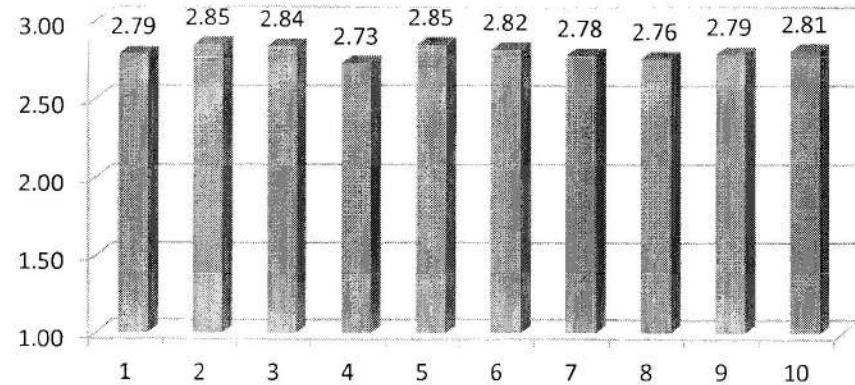
Analysis of Students Feedback on Curriculum



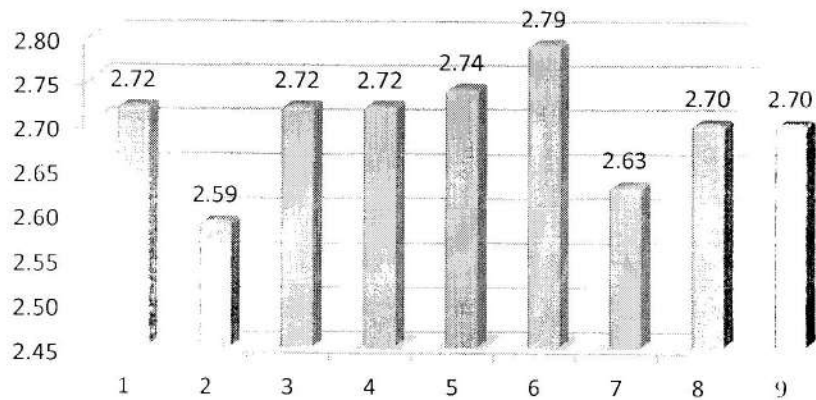
Analysis of Employer Feedback on Curriculum



Analysis of Parents Feedback on Curriculum



Analysis of Alumni Feedback on Curriculum



As per the policy 90% of 3 i.e. 2.7 has been set as threshold. Corrective actions are planned and taken for the questions having response less than the threshold(Highlighted in yellow in the following tables). The Sample size taken are Faculty: 70, Students: 400, Alumni:40 Parents 50 and Employer: 5.

Analysis of Faculty Feedback on Curriculum

S.No	Question's	Very Good	Good	Satisfactory	Unsatisfactory	Total Weightage	3-Scale Weightage
1	How do you rate the sequence of the Courses provided in the curriculum?	55	15	0	0	0.95	2.84
2	How do you rate the syllabus of the courses in relation to the competencies expected out of the course?	54	16	0	0	0.94	2.83
3	How do you rate the structure framed for entire program?	58	12	0	0	0.96	2.87
4	How do you rate the allocation of the credits and contact hours (L T P) to the courses?	65	5	0	0	0.98	2.95
5	How do you rate the offering of the electives in terms of their relevance to the specialization streams and technological advancements?	48	15	7	0	0.90	2.69

6	How do you rate the relevance of the Text Books and reference books by their International recognition to the Courses?	56	12	2	0	0.94	2.83
7	Rate the Size of syllabus in terms of the load on the student	61	5	4	0	0.95	2.86
8	Rate the courses in terms of sequence of offering considering whether the preceding courses have been covered.	57	7	6	0	0.93	2.80
9	Rate the courses in terms of extra learning or self learning considering the design of the courses	45	18	7	0	0.89	2.66
10	How do you rate the evaluation scheme designed for each of the course?	49	18	3	0	0.91	2.74
11	How do you rate the percentage of courses having LAB components and the domain used for designing the experiments for the LAB components?	42	18	10	0	0.86	2.59

Analysis of Students Feedback on Curriculum

S.No	Question's	Very Good	Good	Satisfactory	Unsatisfactory	Total Weightage	3-Scale Weightage
1	How do you rate the sequence of the Courses that you have studied are in sequence to what you have studied in the previous semester?	284	113	3	0	0.93	2.78
2	How do you rate the syllabus of the courses that you have studied in relation to the competencies expected out of the course?	242	123	35	0	0.88	2.64
3	How do you rate the relevance of the units in Syllabus relevant to the course?	320	71	9	0	0.94	2.83
4	How do you rate the sequence of the units in the course?	284	113	3	0	0.93	2.78
5	How do you rate the distribution of the contact hours among the course components (L-T-P)?	321	71	8	0	0.95	2.84

6	How do you rate the offering of the electives in terms of their relevance to the specialization streams?	238	135	27	0	0.88	2.65
7	How do you rate the relevance of the Text Books and reference books by their International recognition to the Courses?	320	71	9	0	0.94	2.83
8	Rate the Size of syllabus in terms of the load on the student	335	20	45	0	0.93	2.79
9	Rate the courses in terms of sequence of offering considering whether the preceding courses have been covered.	317	36	47	0	0.92	2.76
10	How do you rate the percentage of courses having LAB components?	239	132	29	0	0.88	2.64

Analysis of Alumni Feedback on Curriculum

S.No	Question's	Very Good	Good	Satisfactory	Unsatisfactory	Total Weightage	3-Scale Weightage
1	How do you rate relevance of the courses in relation to the program?	28	9	3	0	0.91	2.72
2	How do you rate the sequence of the courses included into the programs?	24	10	6	0	0.86	2.59
3	How do you rate the competencies in relation to the course content?	25	15	0	0	0.91	2.72
4	How do rate the sequence of the topics in the units?	26	13	1	0	0.91	2.72
5	Rate the offering of the in relation to the specialization streams?	28	10	2	0	0.91	2.74
6	How do you rate the offering of the electives in relation to the Technological advancements?	32	5	3	0	0.93	2.79
7	How do you rate the courses which are skills related suiting to the Industry included into the programs?	26	8	6	0	0.88	2.63
8	How do you rate the experiments in terms of their relevance to the real life application?	28	8	4	0	0.90	2.70

9	How do you rate the courses that you have learnt in relation to your current Job	28	8	4	0	0.90	2.70
---	--	----	---	---	---	------	------

Analysis of Parents Feedback on Curriculum

S.No	Question's	Very Good	Good	Satisfactory	Unsatisfactory	Total Weightage	3-Scale Weightage
1	How do you rate the sequence of the Courses that you have studied are in sequence to what you have studied in the previous semester?	38	10	2	0	0.93	2.79
2	How do you rate the syllabus of the courses that you have studied in relation to the competencies expected out of the course?	42	6	2	0	0.95	2.85
3	How do you rate the relevance of the units in Syllabus relevant to the course?	41	7	2	0	0.95	2.84
4	How do you rate the sequence of the units in the course?	36	10	4	0	0.91	2.73
5	How do you rate the distribution of the contact hours among the course components (I T-P)?	42	6	2	0	0.95	2.85
6	How do you rate the offering of the electives in terms of their relevance to the specialization streams?	38	12	0	0	0.94	2.82
7	How do you rate the relevance of the Text Books and reference books by their International recognition to the Courses?	37	11	2	0	0.93	2.78
8	Rate the Size of syllabus in terms of the load on the student?	36	12	2	0	0.92	2.76
9	Rate the courses in terms of sequence of offering considering whether the preceding courses have been covered.	38	10	2	0	0.93	2.79
10	How do you rate the percentage of courses having LAB components?	37	13	0	0	0.94	2.81

Analysis of Employers Feedback on Curriculum

S.No	Question's	Very Good	Good	Satisfactory	Unsatisfactory	Total Weightage	3-Scale Weightage
1	How do you rate relevance of the courses in relation to the program?	3	2	1	0	0.83	2.50
2	How do you rate the competence of the courses related to industry that are included in the program?	2	2	2	0	0.75	2.25
3	How do you rate the sequence of the units in the syllabus?	2	3	1	0	0.79	2.38
4	Rate the courses in relation to the specialization streams?	3	3	0	0	0.88	2.63
5	How do you rate the allocation of the credits and contact hours (L-T-P) to the courses?	5	1	0	0	0.96	2.88
6	How do you rate the offering of the electives in relation to the Technological advancements?	3	2	1	0	0.83	2.50
7	How do you rate the courses which are skills related suiting to the Industry included into the programs?	2	3	1	0	0.79	2.38
8	How do you rate the experiments in terms of their relevance to the real life application?	2	2	2	0	0.75	2.25

Action Taken for Session 2018-19

Feedback, Suggestions and Report of Action Taken

1. From Teachers:

Sr. No	Question below Threshold	Action Taken
1	How do you rate the percentage of courses having LAB components and the domain used for designing the experiments for the LAB components?	<ul style="list-style-type: none">• Field Visits and Internships are arranged.• Value Added courses to provide Hands on Training sessions are arranged.• Short term training sessions for skill enhancement conducted

2. From students:

Sr. No	Question below Threshold	Action Taken
1	How do you rate the syllabus of the courses that you have studied in relation to the competencies expected out of the course? More practical exposure is needed.	<ul style="list-style-type: none">• Students made aware of Course outcomes, Program Outcomes. Field Visits and Internships are arranged.• Smart class room implemented for demonstrate NMIIC developed videos on hands on training sessions.
2	How do you rate the offering of the electives in terms of their relevance to the specialization streams?	<ul style="list-style-type: none">• CBCS curriculum has been implemented.• Electives courses choosing option is reformed.• Students are registered for SWYAM (MOOC) courses.
3	How do you rate the percentage of courses having LAB components and the domain used for designing the experiments for the LAB components?	<ul style="list-style-type: none">• Field Visits and Internships are arranged.• Value Added courses to provide Hands on Training sessions are arranged.• Short term training sessions for skill enhancement conducted

3. From Alumni:

Sr. No	Question below Threshold	Action Taken
1	How do you rate the sequence of the courses included into the programs?	<ul style="list-style-type: none"> Curriculum revised and CBCS System has been implemented for better academic flexibilities.
2	How do you rate the courses which are skills related suiting to the Industry included into the programs?	<ul style="list-style-type: none"> Value Added courses to provide Hands on Training sessions are arranged. Short term training sessions for skill enhancement conducted More units are included focusing the employability and industrial requirements

4. From Parents:

- The University evinces evaluation criteria before examination to students and answer books are shown to the students. The students ascertain their performance and get their doubts cleared.
- All efforts are made to establish coordination with the parents and counseling cell functions properly in the University
- Remote accession of study material enabled.

5. From Employer:

Sr. No	Question below Threshold	Action Taken
1	How do you rate the competence of the courses related to industry that are included in the program?	<ul style="list-style-type: none"> Students made aware of Course outcomes, Program Outcomes. Field Visits and Internships are arranged. Smart class room implemented for demonstrate NMEICT developed videos on hands on training sessions.
2	Rate the courses in relation to the specialization streams?	<ul style="list-style-type: none"> CBCS curriculum has been implemented. Electives courses choosing option is reformed. Students are registered for SWYAM (MOOC) courses.

3	How do you rate the offering of the electives in relation to the Technological advancements?	<ul style="list-style-type: none"> • Value Added courses to provide Hands on Training sessions are arranged.
4	How do you rate the courses which are skills related suiting to the Industry included into the programs?	<ul style="list-style-type: none"> • Field Visits and Internships are arranged. • Short term training sessions for skill enhancement conducted
5	How do you rate the experiments in terms of their relevance to the real life application?	<ul style="list-style-type: none"> • Students are encouraged to undertake societal issues as the problem statements for their final year projects/Thesis.

[Handwritten Signature]

IQAC Coordinator

[Handwritten Signature]

Registrar

Jain VishvaBharati Institute, Ladnun

Feedback from Students on Curriculum

Programme : M.A. Nonviolence and Peace

Semester/Term/Year :

2018-19

Department : Nonviolence and Peace

Students are required to rate the courses on the following attributes using the 4-point scale shown. Please provide the format seperately for each programme.

4.00	3.00	2.00	1.50	0.00
A	B	C	D	
Very Good	Good	Satisfactory	Unsatisfactory	

Parameters	Very Good	Good	Satisfactory	Unsatisfactory
1. How do you rate the sequence of the Courses that you have studied are in sequence to what you have studied in the previous semester? वर्तमान पाठ्यक्रम का पूर्ववर्ती पाठ्यक्रम के क्रम के संबंध का आकलन कीजिये ?	✓			
2. How do you rate the syllabus of the courses that you have studied in relation to the competencies expected out of the course? आप द्वारा पढ़े हुए पाठ्यक्रम से प्राप्त आपकी दक्षता का आकलन कीजिये।	✓			-
3. How do you rate the relevance of the units in Syllabus relevant to the course? पाठ्यक्रम की इकाइयों की प्रासंगिकता का आकलन कीजिये ?	✓			.
4. How do you rate the sequence of the units in the course? पाठ्यक्रम की इकाइयों के क्रम का आकलन कीजिये।	✓			
5. How do you rate the distribution of the contact hours among the course components (L-T-P)? पाठ्यक्रम को पढ़ाने के लिये आवंटित सम्पूर्ण समय की अवधि का आकलन कीजिये।		✓		
6. How do you rate the offering of the electives in terms of their relevance to the specialization streams? पाठ्यक्रम में जो स्वयंचयनीत (Electives) विकल्प दिये गये हैं, उनका विशेषता/दक्षता व तकनीकी उन्नति के संदर्भ में क्या आकलन करेंगे ?		✓		
7. How do you rate the relevance of the Text Books and reference books by their International recognition to the Courses? पाठ्यक्रम को ध्यान में रखते हुए आप पाठ्यपुस्तकों तथा संदर्भ पुस्तकों की (अन्तर्राष्ट्रीय स्तर की मान्यता अनुसार) प्रासंगिक पाठ्यक्रम को ध्यान में रखते हुए कैसा समझते हैं ?	✓			-
8. Rate the Size of syllabus in terms of the load on the student पाठ्यक्रम का आकार विद्यार्थियों के अध्ययन के लिये कैसा है ?	✓			.
9. Rate the courses in terms of sequence of offering considering whether the preceding courses have been covered. पाठ्यक्रम का क्रम पुराने पाठ्यक्रमों को ध्यान में रखते हुए बनाया गया है ? इसका आकलन करें।	✓			
10. How do you rate the percentage of courses having LAB components? पाठ्यक्रम में प्रयोगशाला घटकों के प्रतिशत का आकलन कीजिये।	✓			

Jain VishvaBharati Institute, Ladnun

Jain VishvaBharati Institute, Ladnun

Feedback from Students on Curriculum

Programme : M.A. NVP

Semester/Term/Year : 2018-19

Department : Nonviolence & Peace

Students are required to rate the courses on the following attributes using the 4-point scale shown. Please provide the format seperately for each programme.

4.00	3.00	2.00	1.50	0.00
A	B	C	D	
Very Good	Good	Satisfactory	Unsatisfactory	

Parameters	Very Good	Good	Satisfactory	Unsatisfactory
1. How do you rate the sequence of the Courses that you have studied are in sequence to what you have studied in the previous semester? वर्तमान पाठ्यक्रम का पूर्ववर्ती पाठ्यक्रम के क्रम के संबंध का आंकलन कीजिये ?	✓			
2. How do you rate the syllabus of the courses that you have studied in relation to the competencies expected out of the course? आप द्वारा पढ़े हुए पाठ्यक्रम से प्राप्त आपकी दक्षता का आंकलन कीजिये।	✓			
3. How do you rate the relevance of the units in Syllabus relevant to the course? पाठ्यक्रम की इकाइयों की प्रासंगिकता का आंकलन कीजिये ?	✓			
4. How do you rate the sequence of the units in the course? पाठ्यक्रम की इकाइयों के क्रम का आंकलन कीजिये।	✓			
5. How do you rate the distribution of the contact hours among the course components (L-T-P)? पाठ्यक्रम को पढ़ाने के लिये आवंटित सम्पर्क समय की अवधि का आंकलन कीजिये।	✓			
6. How do you rate the offering of the electives in terms of their relevance to the specialization streams? पाठ्यक्रम में जो स्वयं चयनीय (Electives) विकल्प दिये गये हैं, उनका विशेषता/दक्षता व तकनीकी उन्नति के संदर्भ में क्या आंकलन करेंगे ?	✓			
7. How do you rate the relevance of the Text Books and reference books by their International recognition to the Courses? पाठ्यक्रम को ध्यान में रखते हुए आप पाठ्यपुस्तकों तथा संदर्भ पुस्तकों की (अन्तर्राष्ट्रीय स्तर की मान्यता अनुसार) प्रासंगिक पाठ्यक्रम को ध्यान में रखते हुए कैसा समझते हैं ?	✓			
8. Rate the Size of syllabus in terms of the load on the student पाठ्यक्रम का आकार विद्यार्थियों के अध्ययन के लिये कैसा है ?	✓			
9. Rate the courses in terms of sequence of offering considering whether the preceding courses have been covered. पाठ्यक्रम का क्रम पुराने पाठ्यक्रमों को ध्यान में रखते हुए बनाया गया है ? इसका आंकलन करें।	✓			-
10. How do you rate the percentage of courses having LAB components? पाठ्यक्रम में प्रयोगशाला घटकों के प्रतिशत का आंकलन कीजिये।	✓			

Jain VishvaBharati Institute, Ladnun

Feedback from Students on Curriculum

Programme : M.A. Nonviolence & Peace

Semester/Term/Year :

2018-19

Department : Nonviolence & Peace

Students are required to rate the courses on the following attributes using the 4-point scale shown. Please provide the format seperately for each programme.

4.00	3.00	2.00	1.50	0.00
A	B	C	D	
Very Good	Good	Satisfactory	Unsatisfactory	

Parameters	Very Good	Good	Satisfactory	Unsatisfactory
1. How do you rate the sequence of the Courses that you have studied are in sequence to what you have studied in the previous semester? वर्तमान पाठ्यक्रम का पूर्ववर्ती पाठ्यक्रम के क्रम के संबंध का आंकलन कीजिये ?	✓			
2. How do you rate the syllabus of the courses that you have studied in relation to the competencies expected out of the course? आप द्वारा पढ़े हुए पाठ्यक्रम से प्राप्त आपकी दक्षता का आंकलन कीजिये।	✓			
3. How do you rate the relevance of the units in Syllabus relevant to the course? पाठ्यक्रम की इकाइयों की प्रासंगिकता का आंकलन कीजिये ?	✓			
4. How do you rate the sequence of the units in the course? पाठ्यक्रम की इकाइयों के क्रम का आंकलन कीजिये।	✓			
5. How do you rate the distribution of the contact hours among the course components (L-T-P)? पाठ्यक्रम को पढ़ाने के लिये आवंटित सम्पर्क समय की अवधि का आंकलन कीजिये।	✓			
6. How do you rate the offering of the electives in terms of their relevance to the specialization streams? पाठ्यक्रम में जो स्वयंचयनीत (Electives) विकल्प दिये गये हैं, उनका विशेषता/दक्षता व तकनीकी उन्नति के संदर्भ में क्या आंकलन करेंगे ?	✓			
7. How do you rate the relevance of the Text Books and reference books by their International recognition to the Courses? पाठ्यक्रम को ध्यान में रखते हुए आप पाठ्यपुस्तकों तथा संदर्भ पुस्तकों की (अन्तर्राष्ट्रीय स्तर की मान्यता अनुसार) प्रासंगिक पाठ्यक्रम को ध्यान में रखते हुए कैसा समझते हैं ?	✓			
8. Rate the Size of syllabus in terms of the load on the student पाठ्यक्रम का आकार विद्यार्थियों के अध्ययन के लिये कैसा है ?	✓			
9. Rate the courses in terms of sequence of offering considering whether the preceding courses have been covered. पाठ्यक्रम का क्रम पुराने पाठ्यक्रमों को ध्यान में रखते हुए बनाया गया है ? इसका आंकलन करें।	✓			
10. How do you rate the percentage of courses having LAB components? पाठ्यक्रम में प्रयोगशाला घटकों के प्रतिशत का आंकलन कीजिये।	✓			

Jain VishvaBharati Institute, Ladnun

Jain VishvaBharati Institute, Ladnun

Feedback from Parents on Curriculum

Programme : M.A. in POL

Semester/Term/Year : 2018-19

Department : Wp

Parents are required to rate the courses on the following attributes using the 4-point scale shown. Please provide the format seperaterly for each programme.

4.00	3.00	2.00	1.50	0.00
A	B	C	D	
Very Good	Good	Satisfactory	Unsatisfactory	

Parameters	Very Good	Good	Satisfactory	Unsatisfactory
1. How do you rate the sequence of the Courses that you have studied are in sequence to what you have studied in the previous semester? वर्तमान पाठ्यक्रम का पूर्ववर्ती पाठ्यक्रम के क्रम के संबंध का आंकलन कीजिये ?	✓			
2. How do you rate the syllabus of the courses that you have studied in relation to the competencies expected out of the course? आप द्वारा पढ़े हुए पाठ्यक्रम से प्राप्त आपकी दक्षता का आंकलन कीजिये।	✓			
3. How do you rate the relevance of the units in Syllabus relevant to the course? पाठ्यक्रम की इकाइयों की प्रासंगिकता का आंकलन कीजिये ?	✓			
4. How do you rate the sequence of the units in the course? पाठ्यक्रम की इकाइयों के क्रम का आंकलन कीजिये।	✓			
5. How do you rate the distribution of the contact hours among the course components (L-T-P)? पाठ्यक्रम को पढ़ाने के लिये आवंटित सम्पर्क समय की अवधि का आंकलन कीजिये।	✓			
6. How do you rate the offering of the electives in terms of their relevance to the specialization streams? पाठ्यक्रम में जो स्वयंचयनीत (Electives) विकल्प दिये गये हैं, उनका विशेषता/दक्षता व तकनीकी उन्नति के संदर्भ में क्या आंकलन करेंगे ?	✓			
7. How do you rate the relevance of the Text Books and reference books by their International recognition to the Courses? पाठ्यक्रम को ध्यान में रखते हुए आप पाठ्यपुस्तकों तथा संदर्भ पुस्तकों की (अन्तर्राष्ट्रीय स्तर की मान्यता अनुसार) प्रासंगिक पाठ्यक्रम को ध्यान में रखते हुए कैसा समझते हैं ?	✓			
8. Rate the Size of syllabus in terms of the load on the student पाठ्यक्रम का आकार विद्यार्थियों के अध्ययन के लिये कैसा है ?	✓			
9. Rate the courses in terms of sequence of offering considering whether the preceding courses have been covered. पाठ्यक्रम का क्रम पुराने पाठ्यक्रमों को ध्यान में रखते हुए बनाया गया है ? इसका आंकलन करें।	✓			
10. How do you rate the percentage of courses having LAB components? पाठ्यक्रम में प्रयोगशाला घटकों के प्रतिशत का आंकलन कीजिये।	✓			

Jain VishvaBharati Institute, Ladnun

Feedback from Parents on Curriculum

Programme : M.A in POL

Semester/Term/Year : 2018-19

Department : NON-VIOLENCE & peace

Parents are required to rate the courses on the following attributes using the 4-point scale shown. Please provide the format seperately for each programme.

4.00	3.00	2.00	1.50	0.00
A	B	C	D	
Very Good	Good	Satisfactory	Unsatisfactory	

Parameters	Very Good	Good	Satisfactory	Unsatisfactory
1. How do you rate the sequence of the Courses that you have studied are in sequence to what you have studied in the previous semester? वर्तमान पाठ्यक्रम का पूर्ववर्ती पाठ्यक्रम के क्रम के संबंध का आंकलन कीजिये ?		✓		
2. How do you rate the syllabus of the courses that you have studied in relation to the competencies expected out of the course? आप द्वारा पढ़े हुए पाठ्यक्रम से प्राप्त आपकी दक्षता का आंकलन कीजिये।		✓		
3. How do you rate the relevance of the units in Syllabus relevant to the course? पाठ्यक्रम की इकाइयों की प्रासंगिकता का आंकलन कीजिये ?	✓			
4. How do you rate the sequence of the units in the course? पाठ्यक्रम की इकाइयों के क्रम का आंकलन कीजिये।	✓			
5. How do you rate the distribution of the contact hours among the course components (L-T-P)? पाठ्यक्रम को पढ़ाने के लिये आवंटित सम्पर्क समय की अवधि का आंकलन कीजिये।	✓			
6. How do you rate the offering of the electives in terms of their relevance to the specialization streams? पाठ्यक्रम में जो स्वयं चयनीय (Electives) विकल्प दिये गये हैं, उनका विशेषता/दक्षता व तकनीकी उन्नति के संदर्भ में क्या आंकलन करेंगे ?	✓			
7. How do you rate the relevance of the Text Books and reference books by their International recognition to the Courses? पाठ्यक्रम को ध्यान में रखते हुए आप पाठ्यपुस्तकों तथा संदर्भ पुस्तकों की (अन्तर्राष्ट्रीय स्तर की मान्यता अनुसार) प्रासंगिक पाठ्यक्रम को ध्यान में रखते हुए कैसा समझते हैं ?	✓			
8. Rate the Size of syllabus in terms of the load on the student पाठ्यक्रम का आकार विद्यार्थियों के अध्ययन के लिये कैसा है ?	✓			
9. Rate the courses in terms of sequence of offering considering whether the preceding courses have been covered. पाठ्यक्रम का क्रम पुराने पाठ्यक्रमों को ध्यान में रखते हुए बनाया गया है ? इसका आंकलन करें।	✓			
10. How do you rate the percentage of courses having LAB components? पाठ्यक्रम में प्रयोगशाला घटकों के प्रतिशत का आंकलन कीजिये।	✓			

Jain VishvaBharati Institute, Ladnun

Feedback from Parents on Curriculum

Programme : M. A. Political

Semester/Term/Year :

2018-19

Department : nonviolence and Peace.

Parents are required to rate the courses on the following attributes using the 4-point scale shown. Please provide the format seperately for each programme.

4.00	3.00	2.00	1.50	0.00
A	B	C	D	
Very Good	Good	Satisfactory	Unsatisfactory	

Parameters	Very Good	Good	Satisfactory	Unsatisfactory
1. How do you rate the sequence of the Courses that you have studied are in sequence to what you have studied in the previous semester? वर्तमान पाठ्यक्रम का पूर्ववर्ती पाठ्यक्रम के क्रम के संबंध का आंकलन कीजिये ?		✓		
2. How do you rate the syllabus of the courses that you have studied in relation to the competencies expected out of the course? आप द्वारा पढ़े हुए पाठ्यक्रम से प्राप्त आपकी दक्षता का आंकलन कीजिये।		✓		
3. How do you rate the relevance of the units in Syllabus relevant to the course? पाठ्यक्रम की इकाइयों की प्रासंगिकता का आंकलन कीजिये ?	✓			
4. How do you rate the sequence of the units in the course? पाठ्यक्रम की इकाइयों के क्रम का आंकलन कीजिये।	✓			
5. How do you rate the distribution of the contact hours among the course components (L-T-P)? पाठ्यक्रम को पढ़ाने के लिये आवंटित सम्पर्क समय की अवधि का आंकलन कीजिये।	✓			
6. How do you rate the offering of the electives in terms of their relevance to the specialization streams? पाठ्यक्रम में जो स्वयंचयनीत (Electives) विकल्प दिये गये हैं, उनका विशेषता/दक्षता व तकनीकी उन्नति के संदर्भ में क्या आंकलन करेंगे ?	✓			
7. How do you rate the relevance of the Text Books and reference books by their International recognition to the Courses? पाठ्यक्रम को ध्यान में रखते हुए आप पाठ्यपुस्तक और तथ्यासंदर्भ पुस्तकों की (अन्तर्राष्ट्रीय स्तर की मान्यता अनुसार) प्रासंगिक पाठ्यक्रम को ध्यान में रखते हुए कैसा समझते हैं ?	✓			
8. Rate the Size of syllabus in terms of the load on the student पाठ्यक्रम का आकार विद्यार्थियों के अध्ययन के लिये कैसा है ?	✓			
9. Rate the courses in terms of sequence of offering considering whether the preceding courses have been covered. पाठ्यक्रम का क्रम पुराने पाठ्यक्रमों को ध्यान में रखते हुए बनाया गया है ? इसका आंकलन करें।	✓			
10. How do you rate the percentage of courses having LAB components? पाठ्यक्रम में प्रयोगशाला घटकों के प्रतिशत का आंकलन कीजिये।	✓			

Jain VishvaBharati Institute, Ladnun
Feedback from Employers on Curriculum

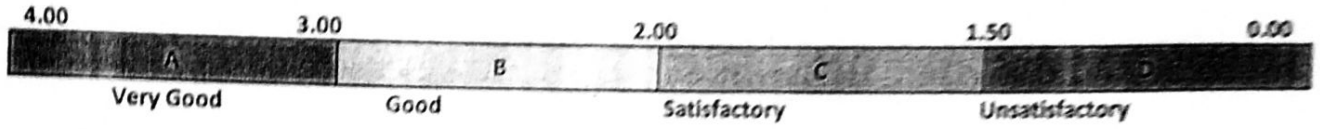
Programme : M.A. NONVIOLENCE

Semester/Term/Year :

2018-19

Department : अखिल भारतीय शांति विभाग

Employers are requested to rate the courses on the following attributes using the 4-point scale shown. Please provide the format seperately for each programme.



Parameters	Very Good	Good	Satisfactory	Unsatisfactory
1. How do you rate relevance of the courses in relation to the program? आपप्रोग्राम के पाठ्यक्रम की प्रासंगिकताकाआंकलनकीजिये।	✓			
2. How do you rate the competence of the courses related to industry that are included in the program? उद्योगसोसम्बन्धितपाठ्यक्रम के औचित्य काआंकलनकीजिये।	✓			
3. How do you rate the sequence of the units in the syllabus? पाठ्यक्रममेंदीर्घईकाइयों के क्रमकाआंकलनकीजिये।	✓			
4. Rate the courses in relation to the specialization streams? पाठ्यक्रमकाविशेषसंकायोंसेसंबंध काआंकलनकैसेकरेंगे ?	✓			
5. How do you rate the allocation of the credits and contact hours (L-T-P) to the courses? ईकाइयोंकोदियेगयेक्रेडिटतथापढ़ाने की अवधि काआंकलनकीजिये ?		✓		
6. How do you rate the offering of the electives in relation to the Technological advancements? तकनीकीउन्नतिको ध्यानमें रखतेहुए स्वचयनितविषयोंकाआंकलनकीजिये।	✓			
7. How do you rate the courses which are skills related suiting to the Industry included into the programs? पाठ्यक्रम के कौशलसंबंधीअंशों की औद्योगिकप्रासंगिकताकाआंकलनकीजिये।	✓			
8. How do you rate the experiments in terms of their relevance to the real life application? प्रयोगशालामेंकियेगयेप्रयोगों की जीवन मेंप्रासंगिकताकाआंकलनकीजिये।	✓			

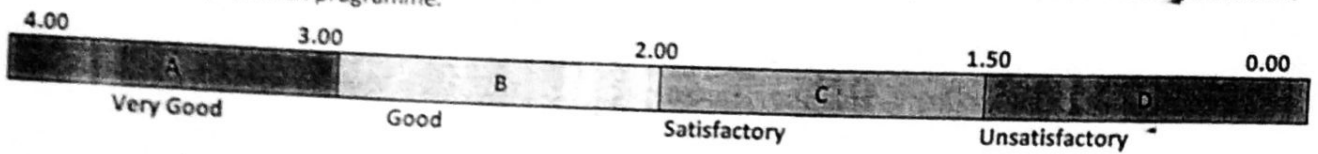
Jain VishvaBharati Institute, Ladnun
Feedback from Employers on Curriculum

Programme : M.A. Nonviolence & Peace

Semester/Term/Year : 2018-19

Department : Nonviolence and Peace

Employers are requested to rate the courses on the following attributes using the 4-point scale shown. Please provide the format seperaterly for each programme.



Parameters	Very Good	Good	Satisfactory	Unsatisfactory
1. How do you rate relevance of the courses in relation to the program? आपको प्रोग्राम के पाठ्यक्रम की प्रासंगिकता का आकलन कीजिये।		/		
2. How do you rate the competence of the courses related to industry that are included in the program? उद्योग से सम्बन्धित पाठ्यक्रम के औचित्य का आकलन कीजिये।	✓			
3. How do you rate the sequence of the units in the syllabus? पाठ्यक्रम में टीयर्स/ईकाइयों के क्रम का आकलन कीजिये।	/			
4. Rate the courses in relation to the specialization streams? पाठ्यक्रम का विशेषज्ञता क्षेत्रों से संबंधित का आकलन कीजिये ?	/			
5. How do you rate the allocation of the credits and contact hours (L-T-P) to the courses? ईकाइयों को दिए गए क्रेडिट/संपर्क घण्टा की आवधि का आकलन कीजिये ?	/			
6. How do you rate the offering of the electives in relation to the Technological advancements? सम्बन्धी उन्नति को ध्यान में रखते हुए स्वयं चयनित विषयों का आकलन कीजिये।	/			
7. How do you rate the courses which are skills related suiting to the industry included into the programs? पाठ्यक्रम के कौशल संबंधी अंशों की औद्योगिक प्रासंगिकता का आकलन कीजिये।	✓			
8. How do you rate the experiments in terms of their relevance to the real life application? प्रयोग/प्रकार/विषय/वेबसाइटों की जीवन में प्रासंगिकता का आकलन कीजिये।	/			

Jain VishvaBharati Institute, Ladnun
Feedback from Employers on Curriculum

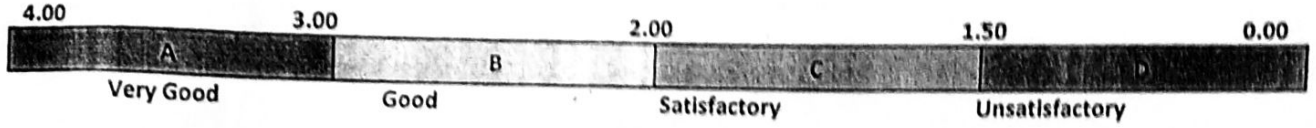
Programme: M.A. Nonviolence and Peace

Semester/Term/Year :

Department: Nonviolence & Peace

2018-19

Employers are requested to rate the courses on the following attributes using the 4-point scale shown. Please provide the format seperaterly for each programme.



Parameters	Very Good	Good	Satisfactory	Unsatisfactory
1. How do you rate relevance of the courses in relation to the program? आपप्रोग्राम के पाठ्यक्रम की प्रासंगिकताकाआंकलनकीजिये।	✓			
2. How do you rate the competence of the courses related to industry that are included in the program? उद्योगसेसम्बन्धितपाठ्यक्रम के औचित्य काआंकलनकीजिये।	✓			
3. How do you rate the sequence of the units in the syllabus? पाठ्यक्रममेंदीर्घईकाइयों के क्रमकाआंकलनकीजिये।	✓			
4. Rate the courses in relation to the specialization streams? पाठ्यक्रमकाविशेषसंकायोसेसंबंध काआंकलनकैसेकरेंगे ?	✓			
5. How do you rate the allocation of the credits and contact hours (L-T-P) to the courses? ईकाइयोंकोदियेगयेक्रेडिटतथापढ़ाने की अवधि काआंकलनकीजिये ?	✓			
6. How do you rate the offering of the electives in relation to the Technological advancements? तकनीकीउन्नतिको ध्यानमें रखतेहुए स्वचयनितविषयोंकाआंकलनकीजिये।	✓			
7. How do you rate the courses which are skills related suiting to the Industry included into the programs? पाठ्यक्रम के कौशलसंबंधीअंशों की औद्योगिकप्रासंगिकताकाआंकलनकीजिये।	✓			
8. How do you rate the experiments in terms of their relevance to the real life application? प्रयोगशालामेंकियेगयेप्रयोगों की जीवन मेंप्रासंगिकताकाआंकलनकीजिये।	✓			

Jain VishvaBharati Institute, Ladnun

Feedback from Alumni on Curriculum

Programme : M.A. Sanskrit

Semester/Term/Year : 2017-18

Department : Prachya Vidya Evam Bhasa

Alumni are required to rate the courses on the following attributes using the 4-point scale shown. Please provide the format seperately for each programme.

4.00	3.00	2.00	1.50	0.00
A	B	C	D	
Very Good	Good	Satisfactory	Unsatisfactory	

Parameters	Very Good	Good	Satisfactory	Unsatisfactory
1. How do you rate relevance of the courses in relation to the program? आप प्रोग्राम के पाठ्यक्रम की प्रासंगिकता का आंकलन कीजिये।	✓			
2. How do you rate the sequence of the courses included into the programs? विषय के पाठ्यक्रम के क्रम का आंकलन करें।	✓			
3. How do you rate the competencies in relation to the course content? पाठ्यक्रम के विभिन्न अंशों के क्रम का आंकलन कीजिये।	✓			
4. How do rate the sequence of the topics in the units? विभिन्न ईकाइयों में दिये गये प्रसंगों के क्रम का आंकलन कीजिये।	✓			
5. Rate the offering of the in relation to the specialization streams? पाठ्यक्रम का विशेष संकायों से संबंध का आंकलन कैसे करेंगे ?	✓			
6. How do you rate the offering of the electives in relation to the Technological advancements? तकनीकी उन्नति को ध्यान में रखते हुए स्वचयनित विषयों का आंकलन कीजिये।	✓			
7. How do you rate the courses which are skills related suiting to the Industry included into the programs? पाठ्यक्रम के कौशल संबंधी अंशों की औद्योगिक प्रासंगिकता का आंकलन कीजिये।		✓		
8. How do you rate the experiments in terms of their relevance to the real life application? प्रयोगशाला में किये गये प्रयोगों की जीवन में प्रासंगिकता का आंकलन कीजिये।		✓		
9. How do you rate the courses that you have learnt in relation to your current Job आपकी वर्तमान सेवा (नौकरी/व्यवसाय) में आपके पढ़े हुए पाठ्यक्रम का आंकलन कीजिये।	✓			

Jain VishvaBharati Institute, Ladnun

Feedback from Alumni on Curriculum

Programme : M.A - Sanskrit

Semester/Term/Year : 2017-18

Department : Prachya Vidya Evam Bhasha

Alumni are required to rate the courses on the following attributes using the 4-point scale shown. Please provide the format seperately for each programme.

4.00	3.00	2.00	1.50	0.00
A	B	C	D	
Very Good	Good	Satisfactory	Unsatisfactory	

Parameters	Very Good	Good	Satisfactory	Unsatisfactory
1. How do you rate relevance of the courses in relation to the program? आप प्रोग्राम के पाठ्यक्रम की प्रासंगिकता का आंकलन कीजिये।	✓			
2. How do you rate the sequence of the courses included into the programs? विषय के पाठ्यक्रम के क्रम का आंकलन करें।	✓			
3. How do you rate the competencies in relation to the course content? पाठ्यक्रम के विभिन्न अंशों के क्रम का आंकलन कीजिये।	✓			
4. How do rate the sequence of the topics in the units? विभिन्न ईकाइयों में दिये गये प्रसंगों के क्रम का आंकलन कीजिये।	✓			
5. Rate the offering of the in relation to the specialization streams? पाठ्यक्रम का विशेष संकायों से संबंध का आंकलन कैसे करेंगे ?	✓			
6. How do you rate the offering of the electives in relation to the Technological advancements? तकनीकी उन्नति को ध्यान में रखते हुए स्वचयनित विषयों का आंकलन कीजिये।	✓			
7. How do you rate the courses which are skills related suiting to the Industry included into the programs? पाठ्यक्रम के कौशल संबंधी अंशों की औद्योगिक प्रासंगिकता का आंकलन कीजिये।		✓		
8. How do you rate the experiments in terms of their relevance to the real life application? प्रयोगशाला में किये गये प्रयोगों की जीवन में प्रासंगिकता का आंकलन कीजिये।		✓		
9. How do you rate the courses that you have learnt in relation to your current Job आपकी वर्तमान सेवा (नौकरी/व्यवसाय) में आपके पढ़े हुए पाठ्यक्रम का आंकलन कीजिये।	✓			

Jain VishvaBharati Institute, Ladnun

Feedback from Alumni on Curriculum

Programme : M.A. Sanskrit

Semester/Term/Year : 2017 - 18

Department : Prachya Vidya Evam Bhasa

Alumni are required to rate the courses on the following attributes using the 4-point scale shown. Please provide the format seperaterly for each programme.

4.00	3.00	2.00	1.50	0.00
A	B	C	D	
Very Good	Good	Satisfactory	Unsatisfactory	

Parameters	Very Good	Good	Satisfactory	Unsatisfactory
1. How do you rate relevance of the courses in relation to the program? आप प्रोग्राम के पाठ्यक्रम की प्रासंगिकता का आंकलन कीजिये।	✓			
2. How do you rate the sequence of the courses included into the programs? विषय के पाठ्यक्रम के क्रम का आंकलन करें।	✓			
3. How do you rate the competencies in relation to the course content? पाठ्यक्रम के विभिन्न अंशों के क्रम का आंकलन कीजिये।	✓			
4. How do rate the sequence of the topics in the units? विभिन्न ईकाइयों में दिये गये प्रसंगों के क्रम का आंकलन कीजिये।	✓			
5. Rate the offering of the in relation to the specialization streams? पाठ्यक्रम का विशेष संकायों से संबंध का आंकलन कैसे करेंगे ?	✓			
6. How do you rate the offering of the electives in relation to the Technological advancements? तकनीकी उन्नति को ध्यान में रखते हुए स्वचयनित विषयों का आंकलन कीजिये।		✓		
7. How do you rate the courses which are skills related suiting to the Industry included into the programs? पाठ्यक्रम के कौशल संबंधी अंशों की औद्योगिक प्रासंगिकता का आंकलन कीजिये।		✓		
8. How do you rate the experiments in terms of their relevance to the real life application? प्रयोगशाला में किये गये प्रयोगों की जीवन में प्रासंगिकता का आंकलन कीजिये।		✓		
9. How do you rate the courses that you have learnt in relation to your current Job आपकी वर्तमान सेवा (नौकरी/व्यवसाय) में आपके पढ़े हुए पाठ्यक्रम का आंकलन कीजिये।	✓			